

Hi~~~~

Breadfruit Mealybug & Elephant's Ear

Grp1

Breadfruit Mealybugs & Elephant's Ear

- Mealybugs are considered pests as they feed on plant juices of greenhouse plants, house plants and subtropical trees and also act as a vector for several plant diseases.
- On breadfruit, the mealybugs are found along the midribs and larger veins on the undersides of the leaves
- They suck the sap from the leaves, and heavy infestations cause the leaves to dry up and die.

Formation



One of the
breadfruit
mealybugs



Symbiotic Relations???

Ans: Parasitism!!!  

- ❖ Mealybugs(+ve) carries out parasitic nutrition on Elephant's Ear(-ve).
- ❖ Positively, mealybugs obtain nutrients by feeding on the plant sap of Elephant's Ear at the leaf veins.
- ❖ However, elephant's Ear loses nutrients through loss of plant sap.

Something Special About Parasitism

- ❖ Ectoparasitism (external) is more frequently encountered
- ❖ Some parasites make use of their host to build shelters
- ❖ Larger parasites tend to be solitary, smaller parasites tend to be in cluster
- ❖ Feeding on host body tissue and sucking host sap are both common methods of obtaining nutrient
- ❖ Percentage of infected hosts is generally low
- ❖ Parasitism seldom causes death of the host

Here's the video





↔ Mutualism
 ↔ Inter-specific competition
 ↔ Intra-specific competition

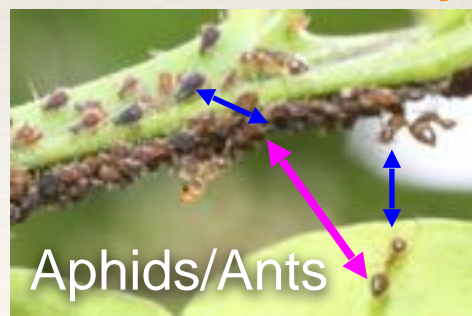
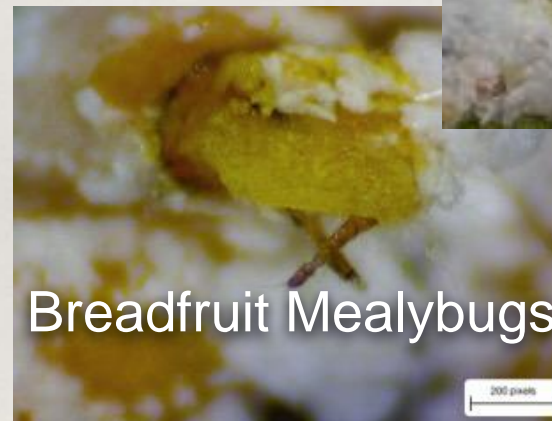
← Predation
 ← Parasitism
 ← Commensalism

Pyramid of number

Spiders

Aphids/Ants Caterpillar
Breadfruit Mealybugs

Elephant's Ear

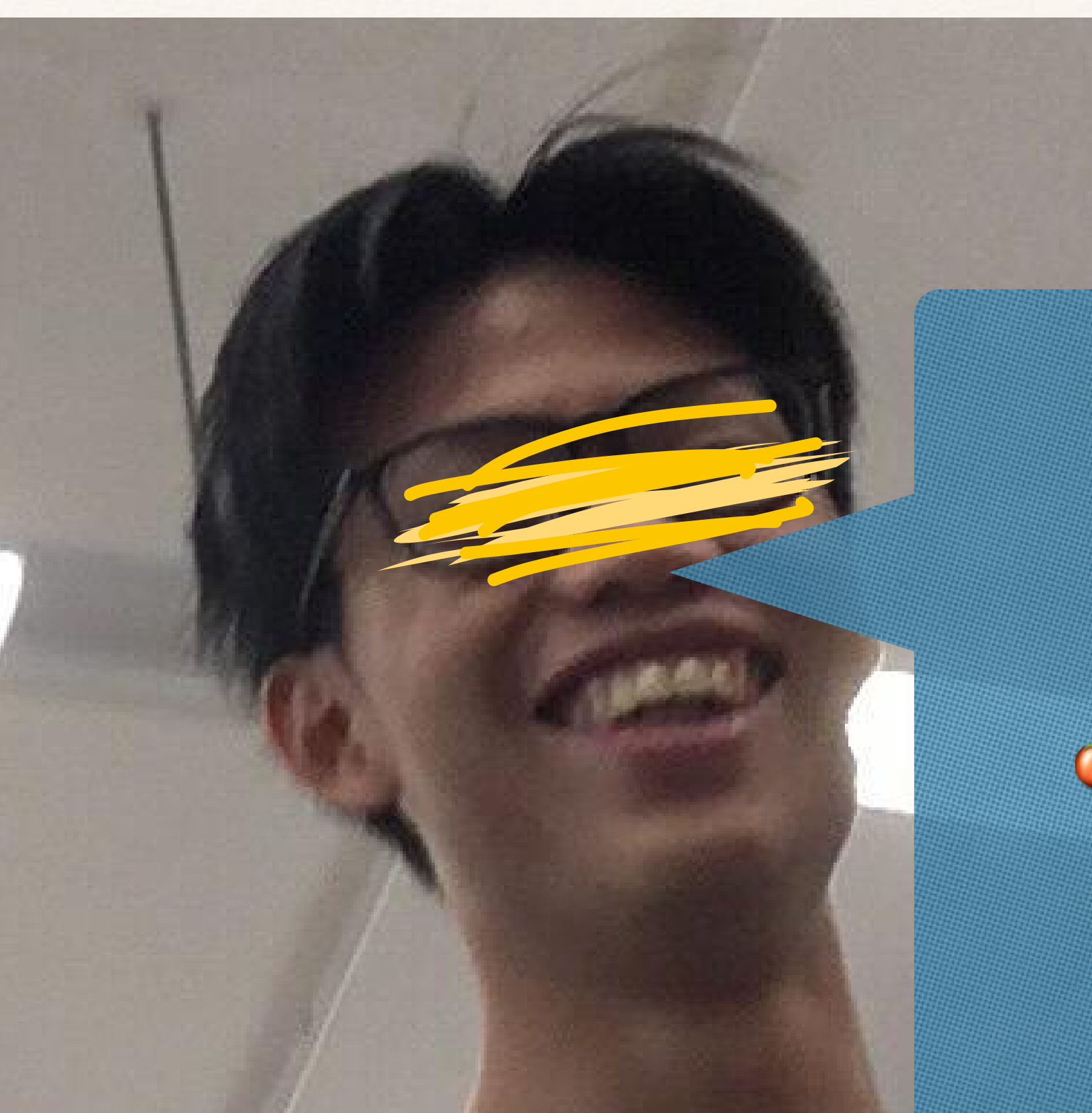


Pyramid of biomass

Spiders

Aphids/Ants Caterpillar
Breadfruit Mealybugs

Elephant's Ear



Done

